

For Continuation See Map 121

4555000mN

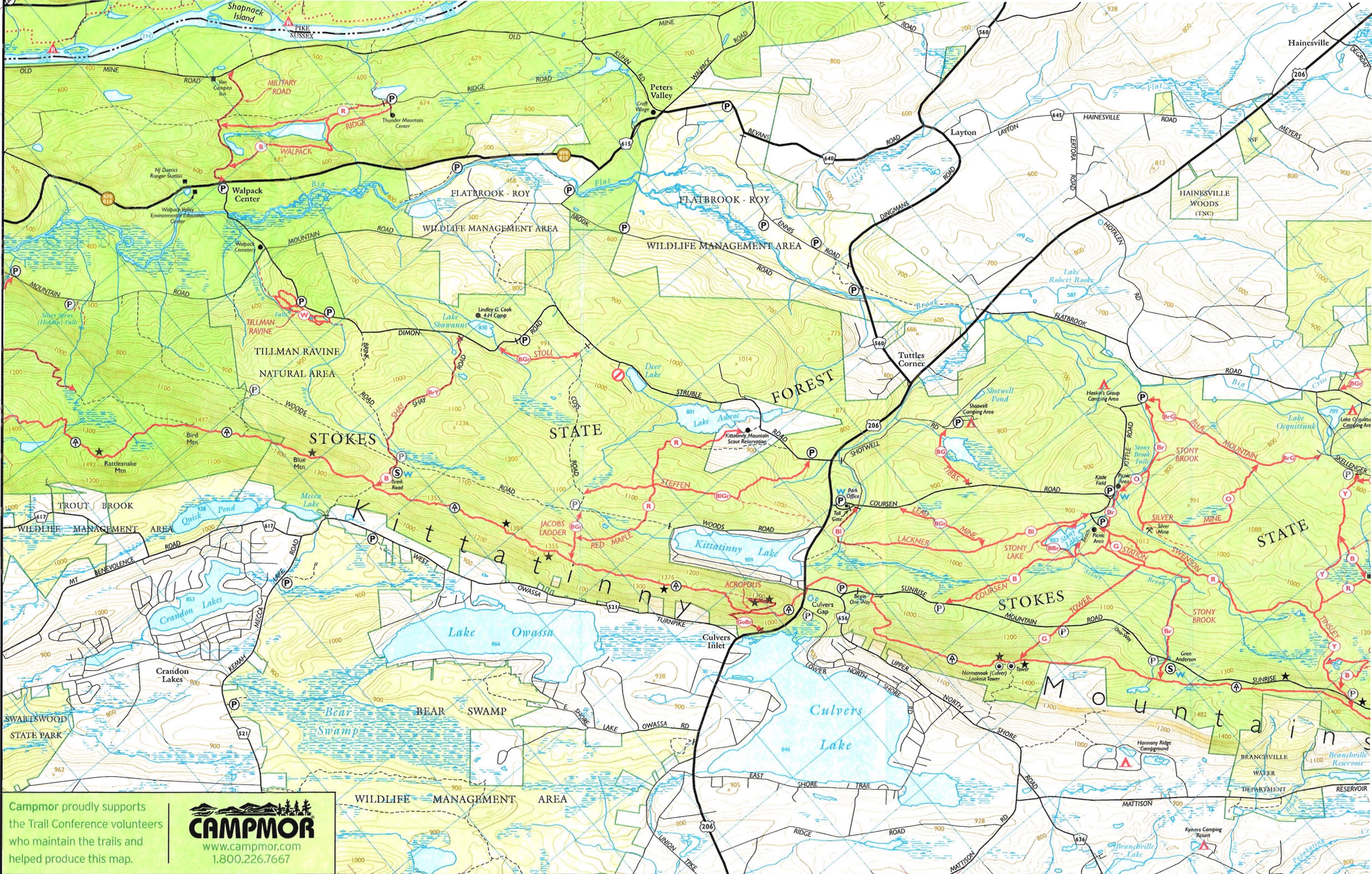
54

53

52

51

4550000mN



Campmor proudly supports the Trail Conference volunteers who maintain the trails and helped produce this map.

**CAMP MOR**  
www.campmor.com  
1.800.226.7667

18T 515000mE

16

17

18

19

18T 520000mE

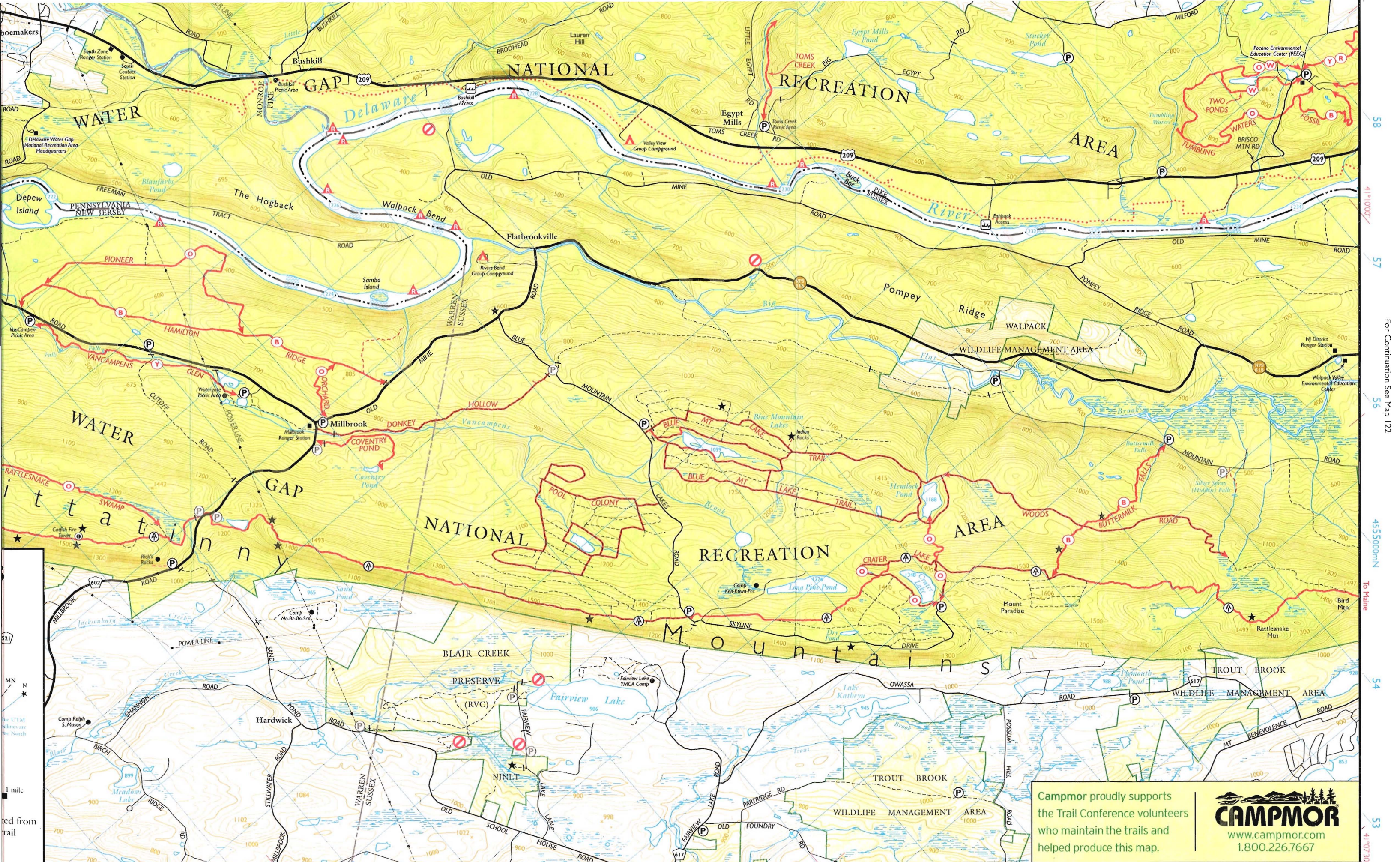
21

22

23

74°47'30"

74°45'00"



58  
41°00'00"  
57  
56  
4555000mN To Maine  
54  
53  
41°07'30"

18T 505000mE 06 07 08 09 10 11 12 13 14  
74°55'00" 74°52'30" 74°50'00"

Campmor proudly supports the Trail Conference volunteers who maintain the trails and helped produce this map.

**CAMP MOR**  
www.campmor.com  
1.800.226.7667

For Continuation See Map 120

41

4540000mN

39

41°02'00"

38

02

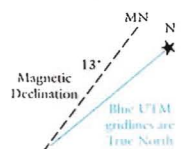
# Kittatinny Trails

## Southern - Trail Map 121

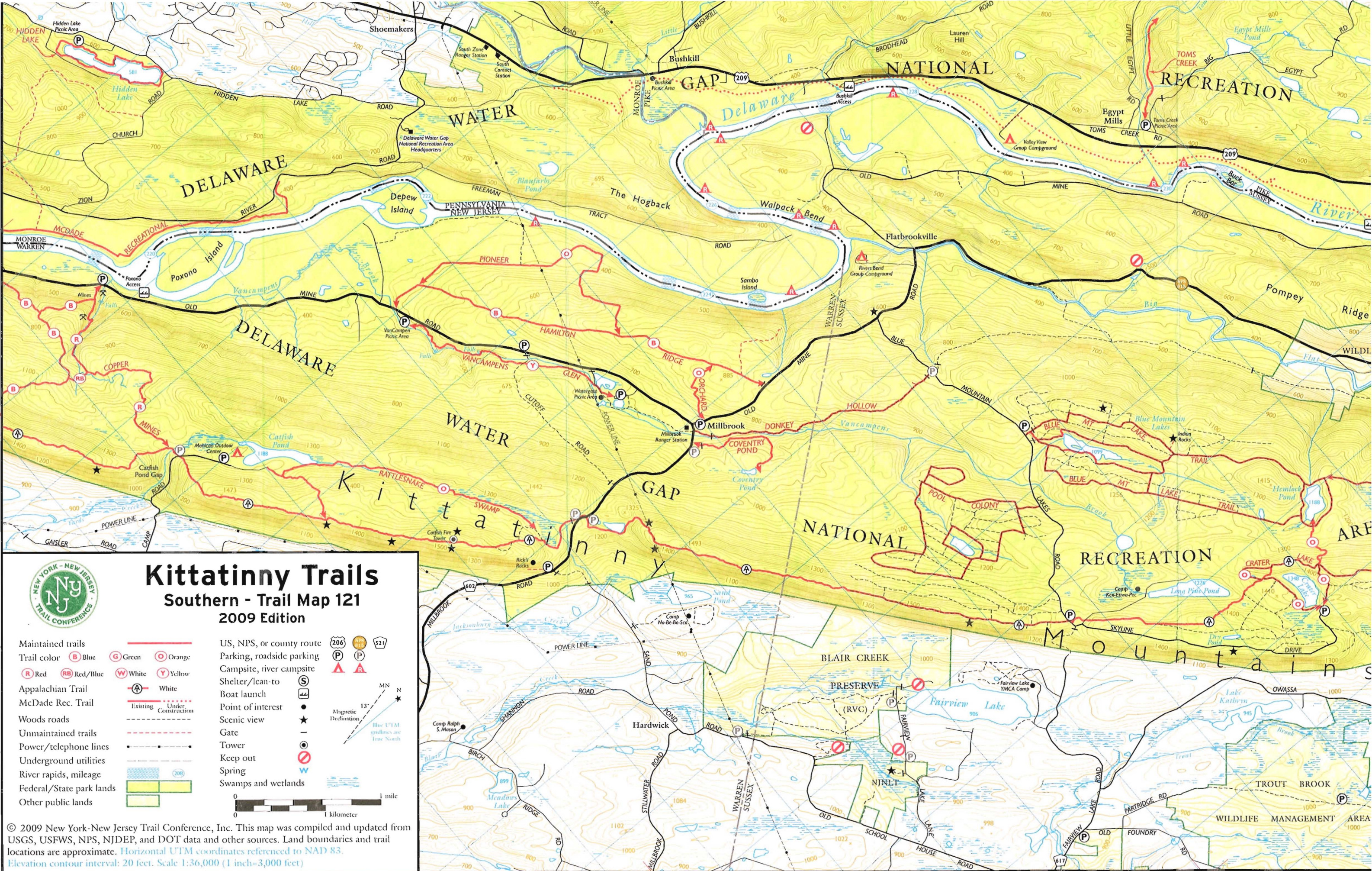
### 2009 Edition

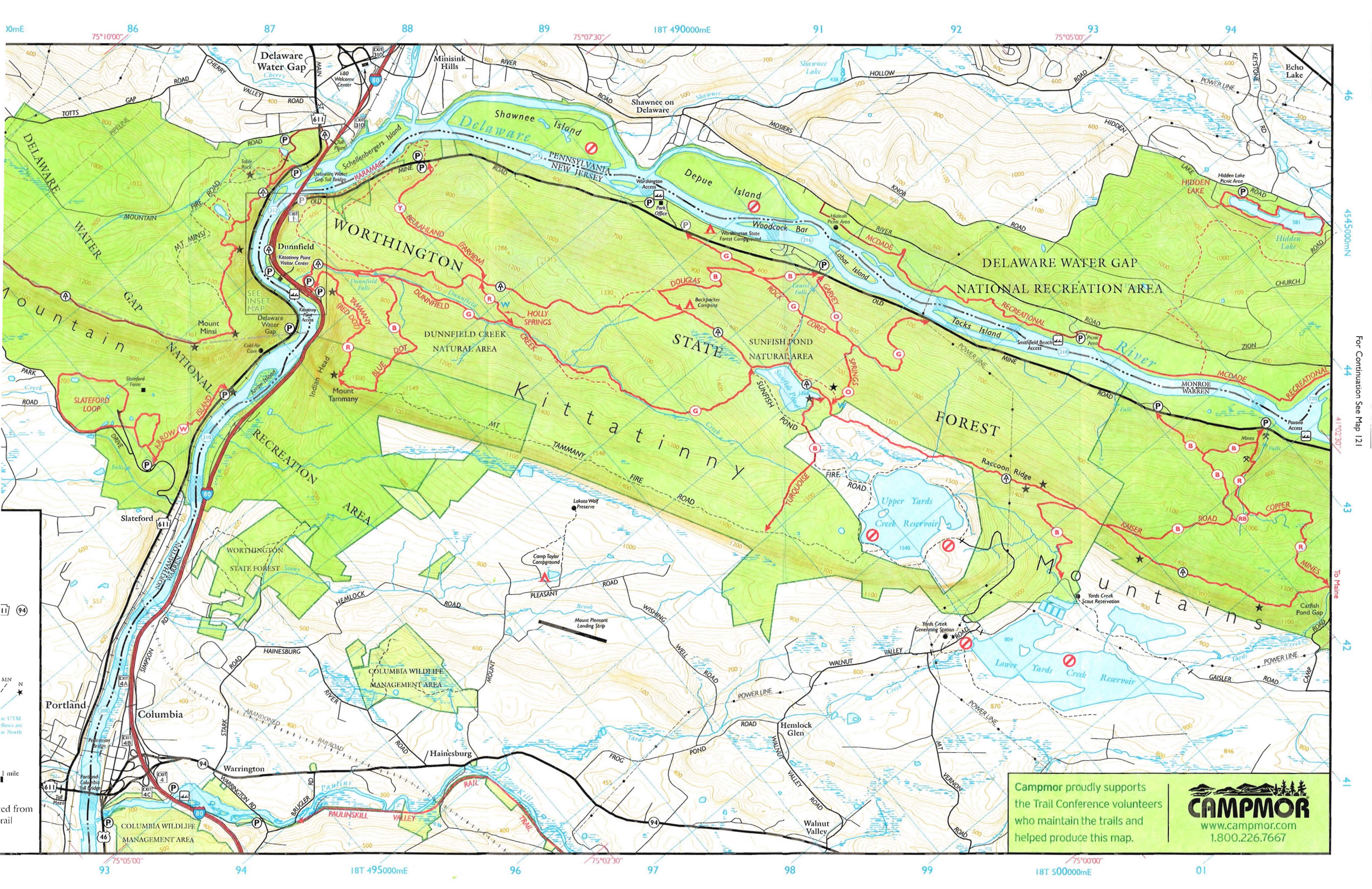


- |                          |  |                           |  |
|--------------------------|--|---------------------------|--|
| Maintained trails        |  | US, NPS, or county route  |  |
| Trail color              |  | Parking, roadside parking |  |
| Appalachian Trail        |  | Campsite, river campsite  |  |
| McDade Rec. Trail        |  | Shelter/lean-to           |  |
| Woods roads              |  | Boat launch               |  |
| Unmaintained trails      |  | Point of interest         |  |
| Power/telephone lines    |  | Scenic view               |  |
| Underground utilities    |  | Gate                      |  |
| River rapids, mileage    |  | Tower                     |  |
| Federal/State park lands |  | Keep out                  |  |
| Other public lands       |  | Spring                    |  |
|                          |  | Swamps and wetlands       |  |



© 2009 New York-New Jersey Trail Conference, Inc. This map was compiled and updated from USGS, USFWS, NPS, NJDEP, and DOT data and other sources. Land boundaries and trail locations are approximate. Horizontal UTM coordinates referenced to NAD 83. Elevation contour interval: 20 feet. Scale 1:36,000 (1 inch=3,000 feet)





Campmor proudly supports the Trail Conference volunteers who maintain the trails and helped produce this map.



45 44 43 42 41  
4545000mN  
41°02'30"  
To Maine

10mE  
75°10'00"  
86  
87  
88  
89  
90  
91  
92  
93  
94  
18T 490000mE  
18T 495000mE  
18T 500000mE  
75°05'00"  
75°02'30"  
75°00'00"  
18T 500000mE  
01



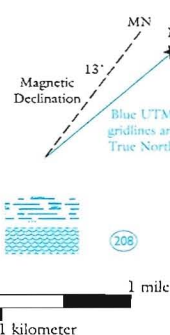
# Kittatinny Trails

## Northern - Trail Map 122

### 2009 Edition

- Maintained trails
- Trail color
- Black
  - Black/Gray
  - Blue
  - Blue/Brown
  - Blue/Gray
  - Blue/Green
  - Blue/Yellow
  - Brown
  - Brown/Green
  - Brown/Red
  - Brown/Yellow
  - Gold/Brown
  - Gray
  - Green
  - Orange
  - Pink
  - Red/Yellow
  - Red
  - White
  - Yellow
- Appalachian Trail White
- McDade Rec. Trail Existing Under Construction
- Woods roads
- Unmaintained trails
- Power/telephone lines
- Underground utilities
- Federal/State park lands
- Other public lands

- US, PA State, or county route
- Parking, roadside parking
- Campsite, river campsite
- Shelter/lean-to
- Boat launch
- Point of interest
- Scenic view
- Gate
- Tower
- Keep out
- Spring
- Swamps and wetlands
- River rapids, mileage



© 2009 New York-New Jersey Trail Conference, Inc. This map was compiled and updated from USGS, USFWS, NPS, NJDEP, and DOT data and other sources. Land boundaries and trail locations are approximate. Horizontal UTM coordinates referenced to NAD 83. Elevation contour interval: 20 feet. Scale 1:36,000 (1 inch=3,000 feet)

